



**SABRI- Sabedoria
Agrícola**

Drop Deposition Analysis
Stol aero agrícola - Ceal 1

Overall Information



Date and Time

2/7/2023 8:13:46 AM



Application Rate

10,0 L/ha



Sprayer Flow

0,00 L/min



Wind Speed

0,0 km/h



Temperature

0 °C



Spread Factor

Syngenta



Spraying Type

Aerial



Sprayer Pressure

0,00 bar



Sprayer Speed

0,0 km/h



Wind Direction

-



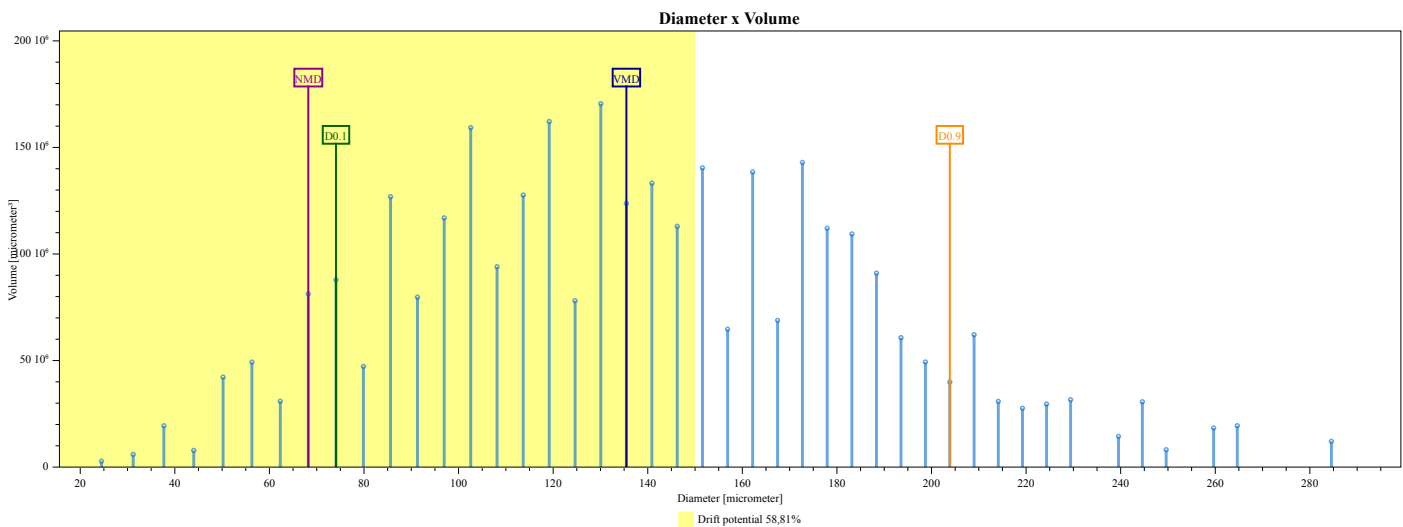
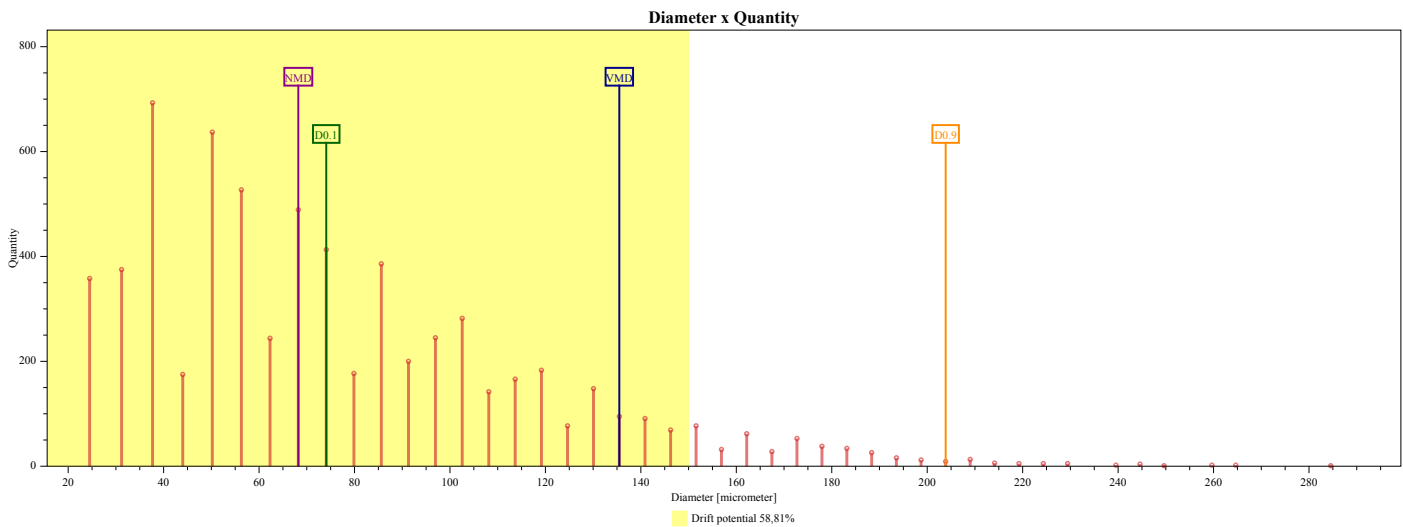
Air Humidity

0 %

Observations

Overall Results

Analysed Area	56,70 cm ²	Covered Area	2,59%
Applied Volume on Paper	0,056 μL/cm ²	Density	116,50 drops/cm ²
Quantity of Drops	6605	Relative Amplitude	0,96
Diameter Variation Coefficient	52,70%	Drift Potential	58,81%
VMD	135,49 μm	D0.1	74,08 μm
D0.9	203,87 μm	NMD	68,22 μm
Drop Size Classification	Very Fine	Largest Drop	284,56 μm
Smallest Drop	24,50 μm	Average Diameter	77,23 μm



E9 - Informations

Plant Height - Plant Depth -

Leaf Position - Farm Plot

Farm Plant Line

Results

Analysed Area 8,10 cm² Covered Area 2,76%

Applied Volume on Paper 0,060 μL/cm² Density 118,65 drops/cm²

Quantity of Drops 961 Relative Amplitude 0,92

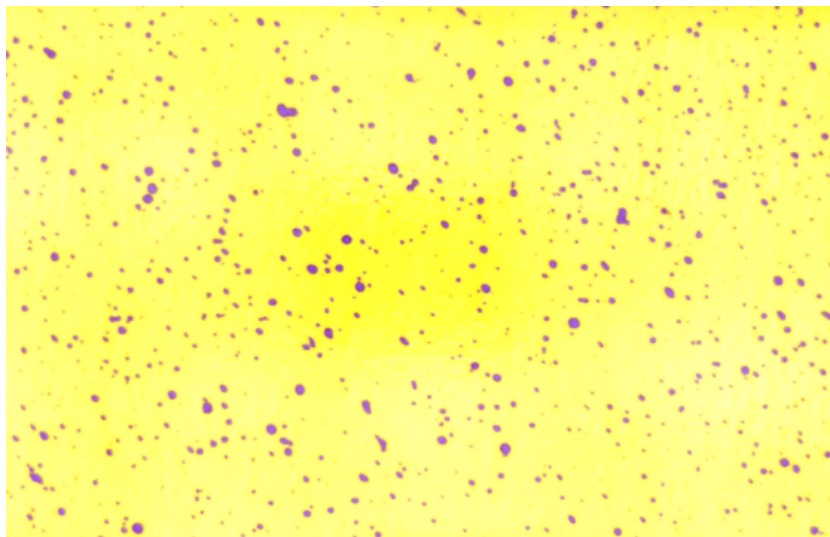
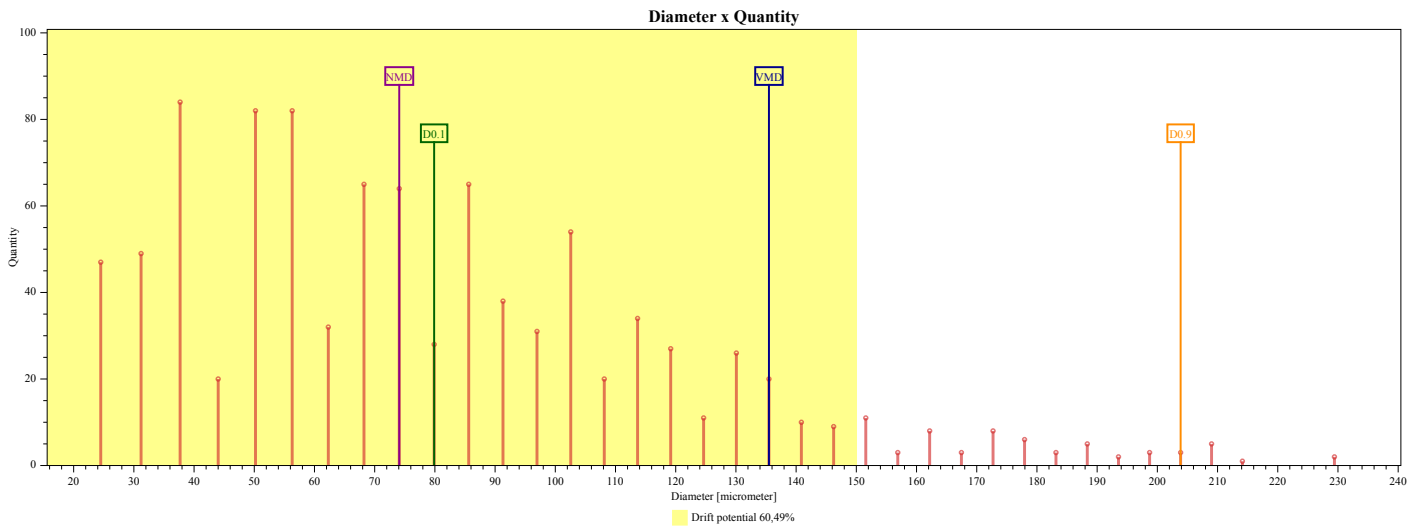
Diameter Variation Coefficient 50,41% Drift Potential 60,49%

VMD 135,49 μm D0.1 79,88 μm

D0.9 203,87 μm NMD 74,08 μm

Drop Size Classification Very Fine Largest Drop 229,41 μm

Smallest Drop 24,50 μm Average Diameter 80,19 μm



E6 - Informations

Plant Height -

Plant Depth -

Leaf Position -

Farm Plot

Farm Plant Line

Results

Analysed Area 8,10 cm²

8,10 cm²

Covered Area 2,23%

2,23%

Applied Volume on Paper 0,049 μL/cm²

0,049 μL/cm²

Density 98,40 drops/cm²

98,40 drops/cm²

Quantity of Drops 797

797

Relative Amplitude 0,82

0,82

Diameter Variation Coefficient 55,68%

55,68%

Drift Potential 49,72%

49,72%

VMD 151,57 μm

151,57 μm

D0.1 79,88 μm

79,88 μm

D0.9 203,87 μm

203,87 μm

NMD 68,22 μm

68,22 μm

Drop Size Classification Fine

Fine

Largest Drop 229,41 μm

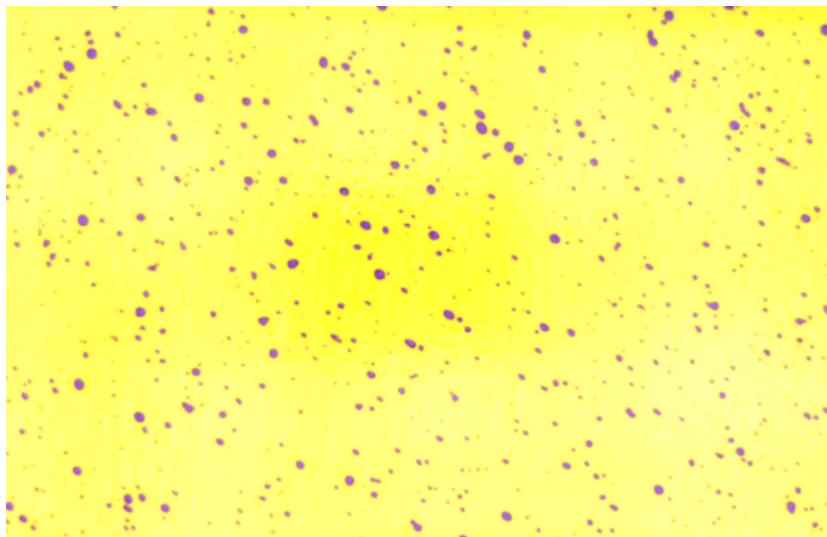
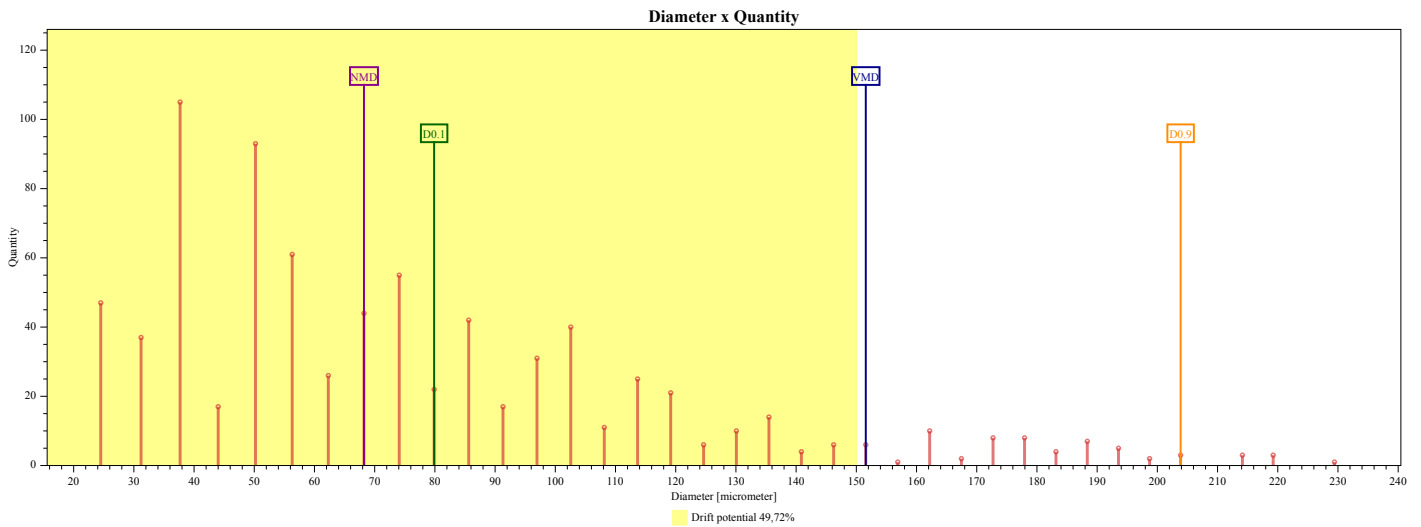
229,41 μm

Smallest Drop 24,50 μm

24,50 μm

Average Diameter 76,70 μm

76,70 μm



E3 - Informations

Plant Height - **Plant Depth** -

Leaf Position - **Farm Plot**

Farm Plant Line

Results

Analysed Area 8,10 cm² **Covered Area** 1,87%

Applied Volume on Paper 0,037 μL/cm² **Density** 113,96 drops/cm²

Quantity of Drops 923 **Relative Amplitude** 1,31

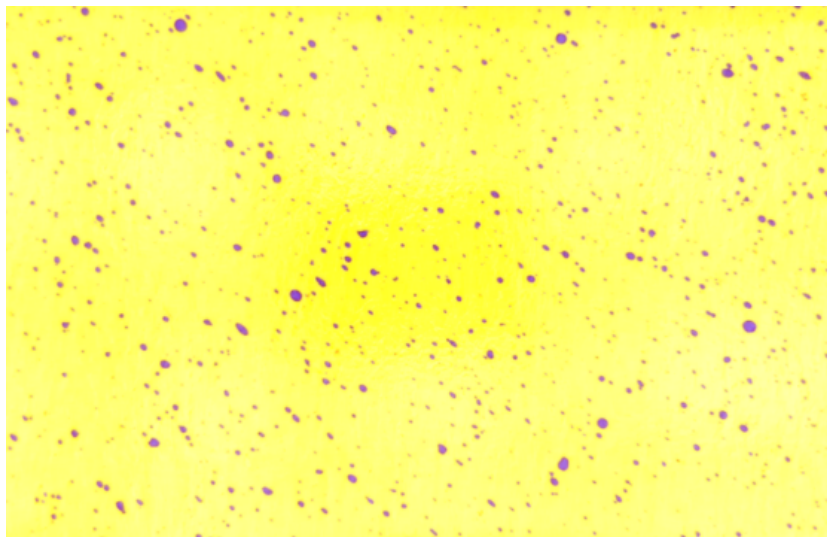
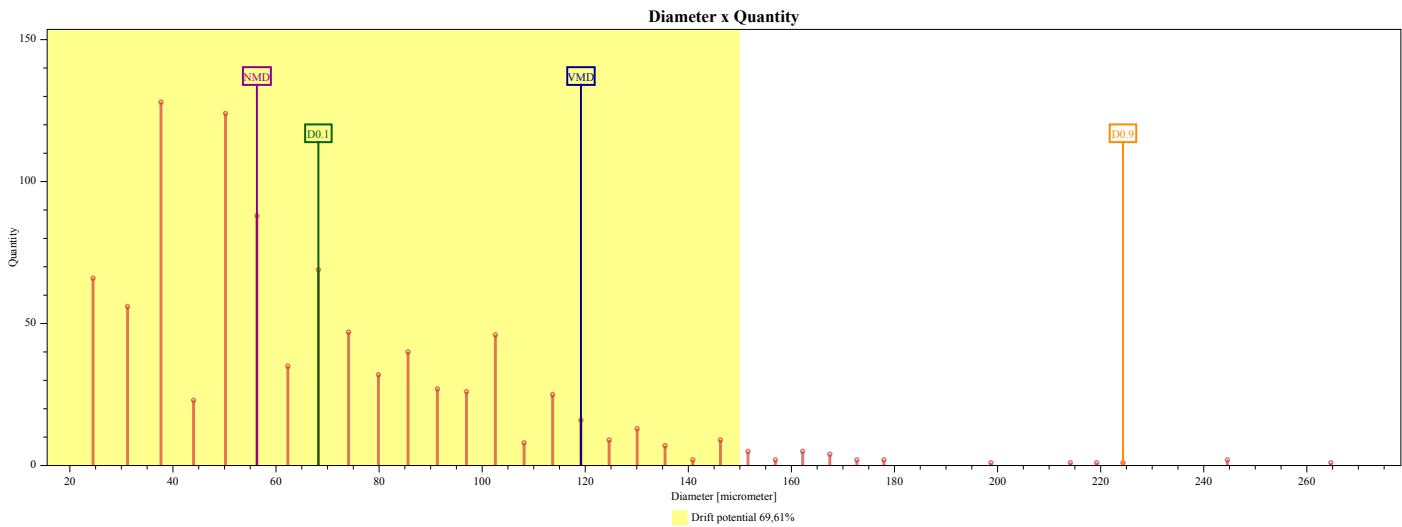
Diameter Variation Coefficient 52,21% **Drift Potential** 69,61%

VMD 119,17 μm **D0.1** 68,22 μm

D0.9 224,33 μm **NMD** 56,29 μm

Drop Size Classification Very Fine **Largest Drop** 264,66 μm

Smallest Drop 24,50 μm **Average Diameter** 67,46 μm



0 - Informations

Plant Height - **Plant Depth** -

Leaf Position - **Farm Plot**

Farm Plant Line

Results

Analysed Area 8,10 cm² **Covered Area** 2,69%

Applied Volume on Paper 0,056 μL/cm² **Density** 145,93 drops/cm²

Quantity of Drops 1182 **Relative Amplitude** 0,92

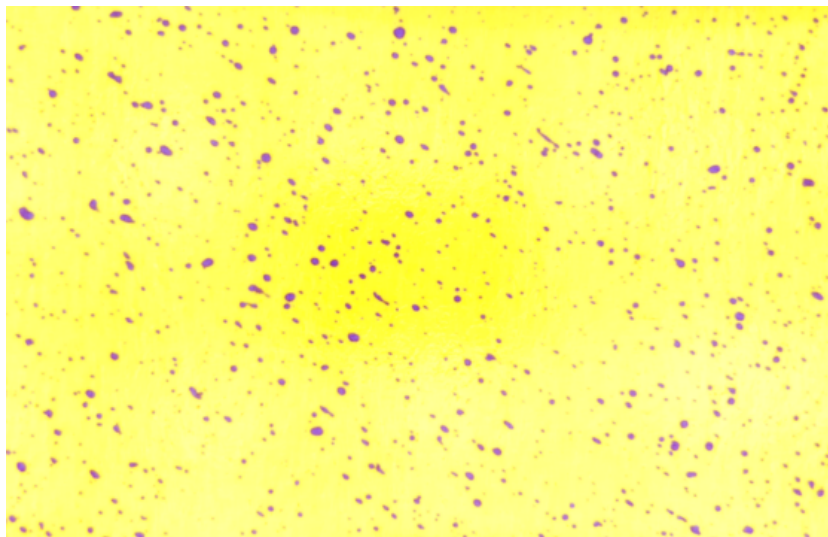
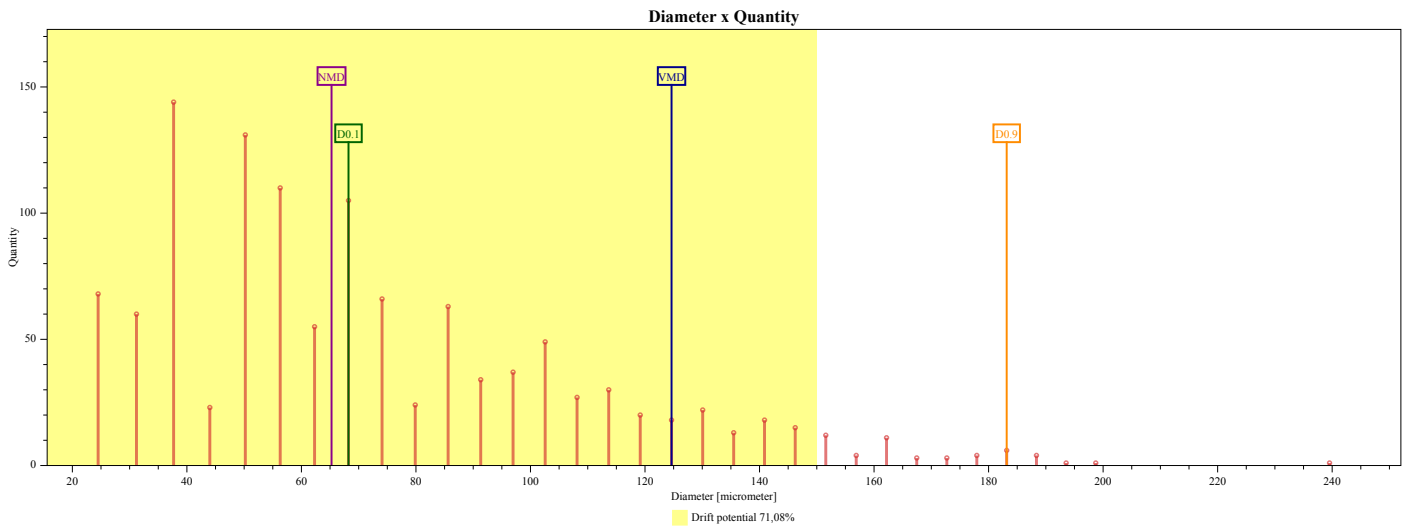
Diameter Variation Coefficient 50,43% **Drift Potential** 71,08%

VMD 124,64 μm **D0.1** 68,22 μm

D0.9 183,16 μm **NMD** 65,26 μm

Drop Size Classification Very Fine **Largest Drop** 239,54 μm

Smallest Drop 24,50 μm **Average Diameter** 72,76 μm



D3 - Informations

Plant Height - **Plant Depth** -

Leaf Position - **Farm Plot**

Farm Plant Line

Results

Analysed Area 8,10 cm² **Covered Area** 3,54%

Applied Volume on Paper 0,078 μL/cm² **Density** 153,46 drops/cm²

Quantity of Drops 1243 **Relative Amplitude** 1,07

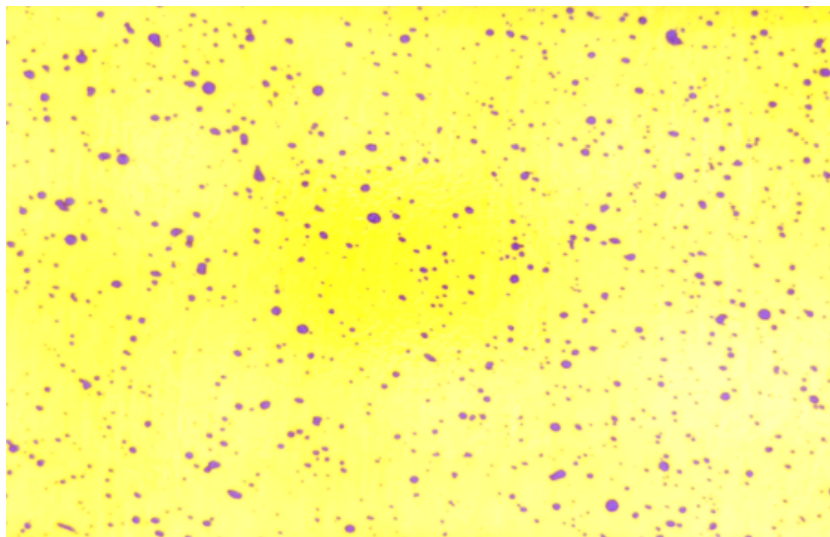
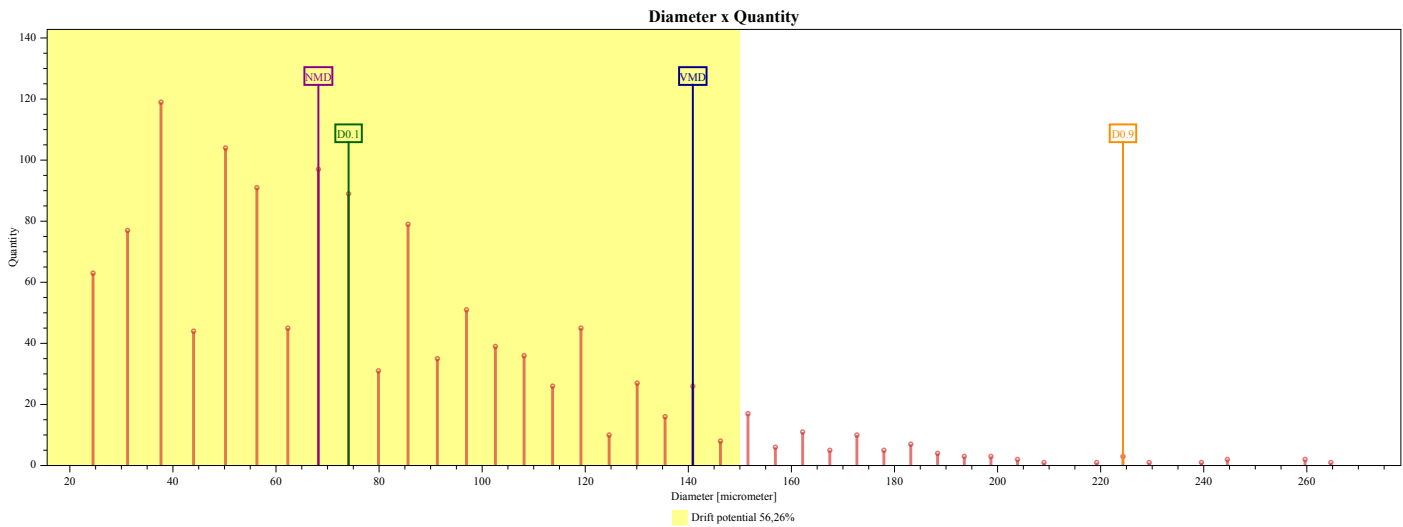
Diameter Variation Coefficient 53,21% **Drift Potential** 56,26%

VMD 140,87 μm **D0.1** 74,08 μm

D0.9 224,33 μm **NMD** 68,22 μm

Drop Size Classification Very Fine **Largest Drop** 264,66 μm

Smallest Drop 24,50 μm **Average Diameter** 78,27 μm



D6 - Informations

Plant Height - **Plant Depth** -

Leaf Position - **Farm Plot**

Farm Plant Line

Results

Analysed Area 8,10 cm² **Covered Area** 2,44%

Applied Volume on Paper 0,055 μL/cm² **Density** 104,08 drops/cm²

Quantity of Drops 843 **Relative Amplitude** 0,88

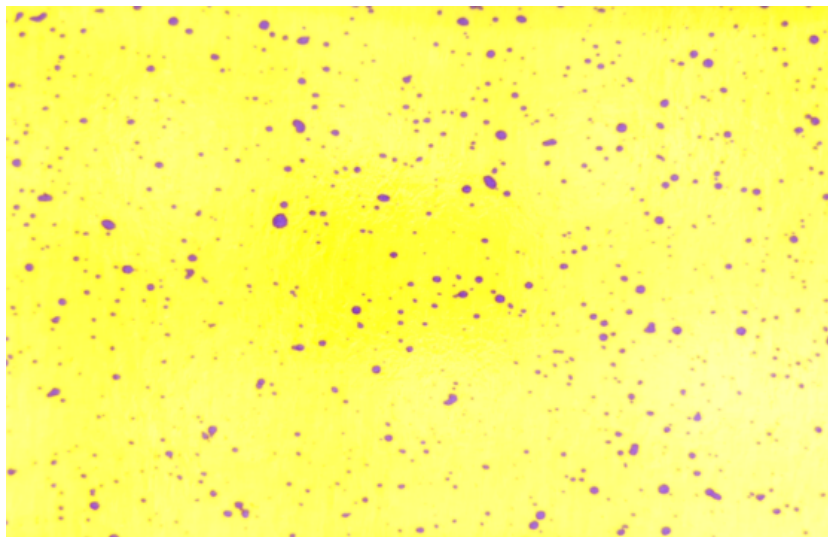
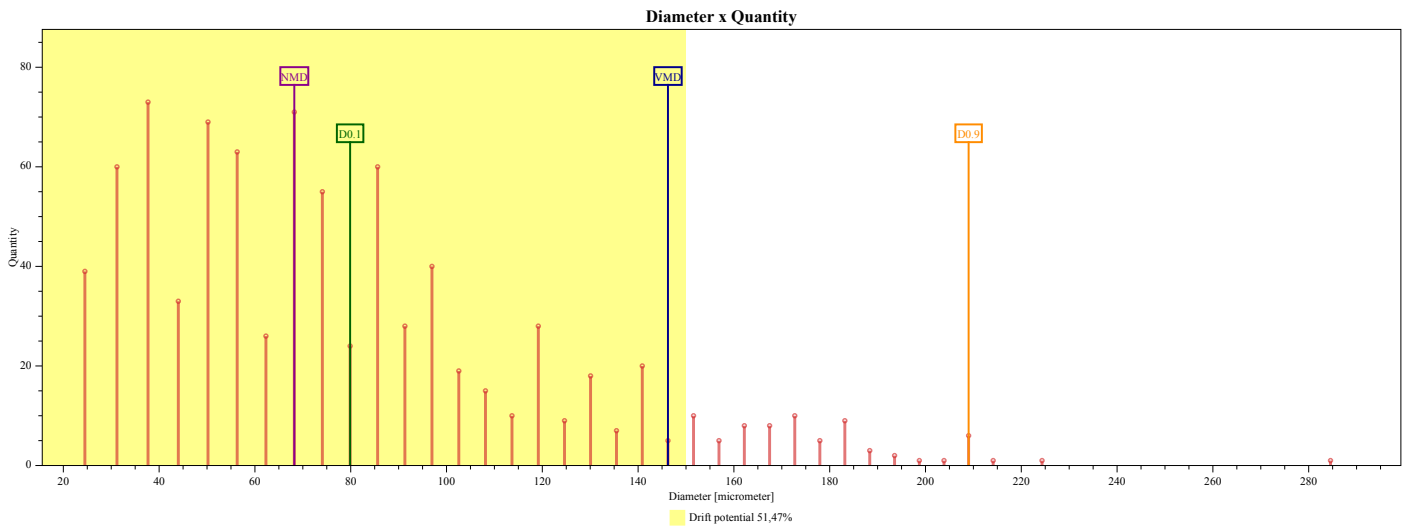
Diameter Variation Coefficient 53,79% **Drift Potential** 51,47%

VMD 146,23 μm **D0.1** 79,88 μm

D0.9 209,00 μm **NMD** 68,22 μm

Drop Size Classification Fine **Largest Drop** 284,56 μm

Smallest Drop 24,50 μm **Average Diameter** 79,01 μm



D9 - Informations

Plant Height - Plant Depth -

Leaf Position - Farm Plot

Farm Plant Line

Results

Analysed Area 8,10 cm² Covered Area 2,57%

Applied Volume on Paper 0,056 μL/cm² Density 80,99 drops/cm²

Quantity of Drops 656 Relative Amplitude 0,69

Diameter Variation Coefficient 48,01% Drift Potential 56,41%

VMD 140,87 μm D0.1 91,31 μm

D0.9 188,36 μm NMD 85,62 μm

Drop Size Classification Very Fine Largest Drop 249,62 μm

Smallest Drop 24,50 μm Average Diameter 91,01 μm

